



Cambridge International AS & A Level

GEOGRAPHY

9696/41

Paper 4 Advanced Human Geography Options

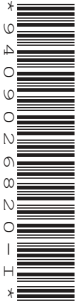
May/June 2020

INSERT

1 hour 30 minutes

INFORMATION

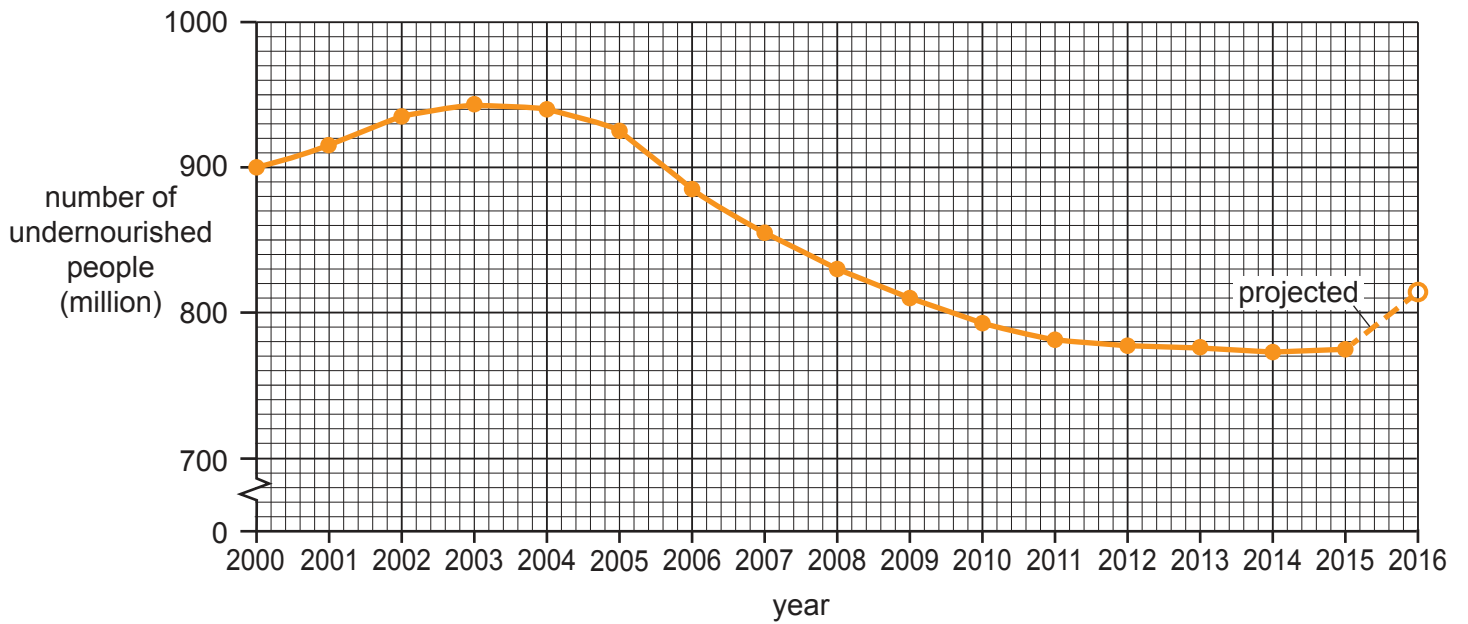
- This insert contains all the resources referred to in the questions.
- You may annotate this insert and use the blank spaces for planning. **Do not write your answers** on the insert.



This document has **8** pages. Blank pages are indicated.

Fig. 1.1 for Question 1

Number of undernourished people in the world, 2000–15 and projected for 2016



An undernourished person does not have enough food to meet the daily minimum requirement over one year.

Fig. 4.1 for Question 4

Part of a landfill site for solid waste in an HIC in Europe



Fig. 7.1 for Question 7
Receipts from international tourism, by country, 2017

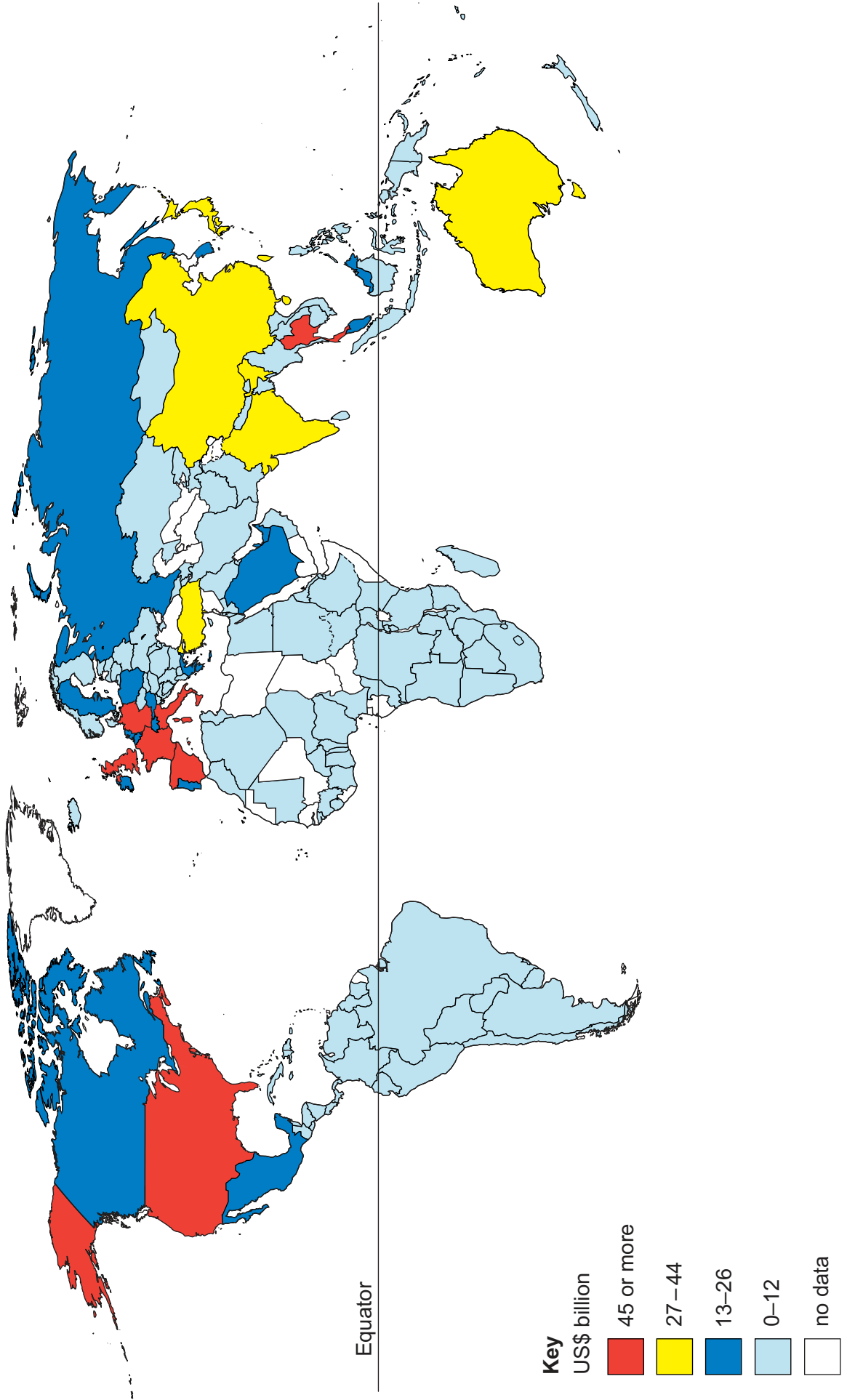
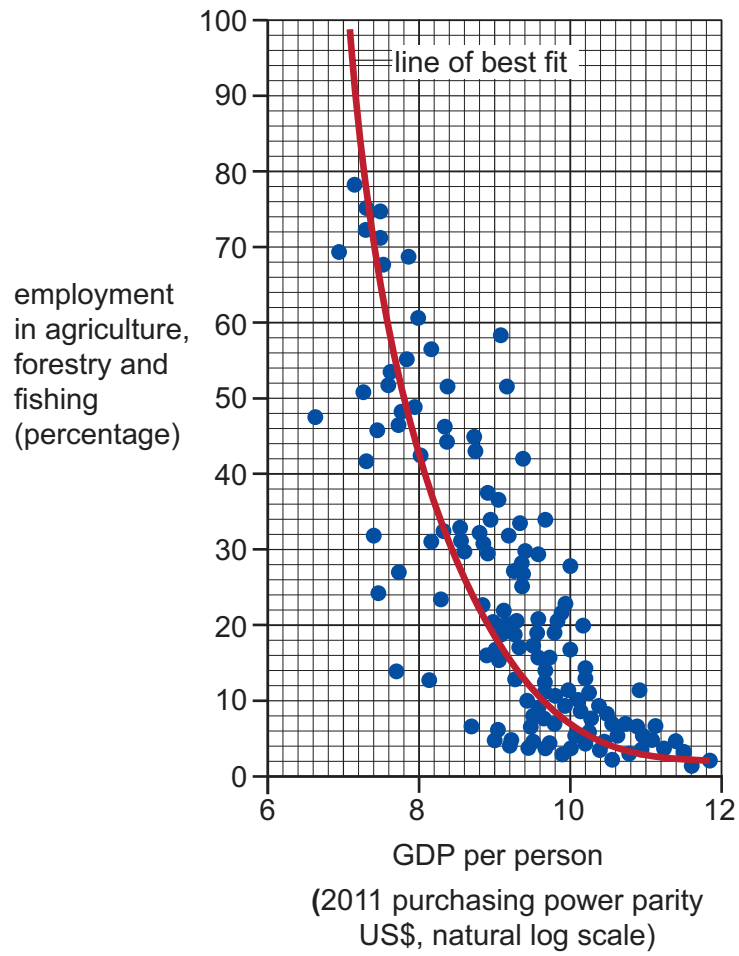


Fig. 10.1 for Question 10

GDP per person and percentage employment in agriculture, forestry and fishing, by country, 2015



BLANK PAGE

The boundaries and names shown, the designations used and the presentation of material on the maps contained in this question paper/insert do not imply official endorsement or acceptance by Cambridge Assessment International Education concerning the legal status of any country, territory, or area or any of its authorities, or of the delimitation of its frontiers or boundaries.

Permission to reproduce items where third-party owned material protected by copyright is included has been sought and cleared where possible. Every reasonable effort has been made by the publisher (UCLES) to trace copyright holders, but if any items requiring clearance have unwittingly been included, the publisher will be pleased to make amends at the earliest possible opportunity.

To avoid the issue of disclosure of answer-related information to candidates, all copyright acknowledgements are reproduced online in the Cambridge Assessment International Education Copyright Acknowledgements Booklet. This is produced for each series of examinations and is freely available to download at www.cambridgeinternational.org after the live examination series.

Cambridge Assessment International Education is part of the Cambridge Assessment Group. Cambridge Assessment is the brand name of the University of Cambridge Local Examinations Syndicate (UCLES), which itself is a department of the University of Cambridge.